

B&C X-LITE SOFTSHELL /MEN - BS62

SOFTSHELL JACKET



Media player compatible: small opening for earphone cord in right chest pocket + hidden earphone loop on the collar

Chin protector

Full front reverse zip fastener with zip pull

Right chest zipped pocket with reverse zip fastening, garage & zip pull

Full inner placket in outer Softshell fabric + 2 inner pockets

Performance fit: ergonomic body shape articulated raglan sleeves

2 front zipped pockets

Adjustable bottom hem with elasticated drawcords and stoppers

Adjustable cuffs with rubber tab

High performance 3-layer Softshell jacket - Light Pack jacket

Outer layer: 94% polyester - 6% elastane
Woven Softshell (300 g/m² - total weight - all layers)

Mid layer: bonded breathable membrane, windproof, waterproof

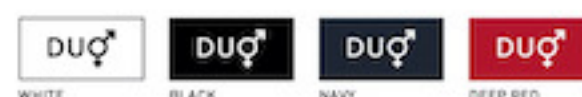
Inner layer: 100% polyester mesh

Waterproof: 5000 mm

Breathable: 5000 MVP

S - M - L - XL - 2XL - 3XL

1 pc/pack & 10 pcs/carton



- Windproof
- Water-repellent
- Waterproof
- 4-way stretch
- Thermo-insulated
- Critical seams taped
- Breathable

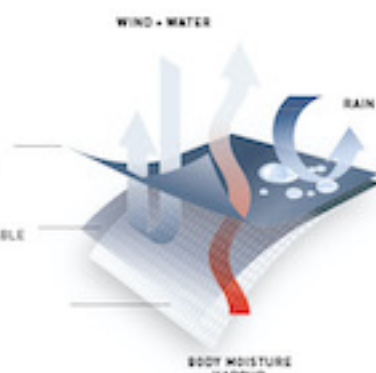
B&C LIGHT PACK CONCEPT:



OUTER LAYER
WOVEN WATER REPELLENT FABRIC (74% PES - 6% ELASTANE)

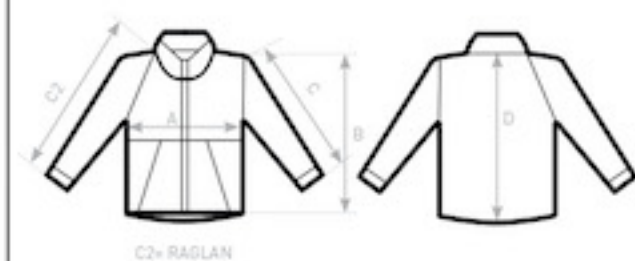
MEMBRANE LAYER
BONDED WATERPROOF, WINDPROOF AND BREATHABLE MEMBRANE

INNER LAYER
100% PES MESH LINING



DUO
CONCEPT

with B&C X-Lite Softshell /women



SIZES [CM]

B&C X-LITE SOFTSHELL /M. JM 951
A HALF CHEST
B BODY LENGTH FROM NECK POINT
C2 SLEEVE LENGTH FROM NECK POINT
D CENTER BACK LENGTH

	XS	S	M	L	XL	2XL	3XL
A	-	52,8	55,8	58,8	62,8	66,8	70,8
B	-	68,5	70	71,5	73	74,5	76
C2	-	79	80,4	81,8	84	86,2	88,4
D	-	65,6	67,2	68,3	70,1	71,4	73,2

B&C
COLLECTION
OUTER WEAR /UNIT